

Uputstvo za korišćenje webmail programa na serveru odisej.rect.bg.ac.rs

1. Webmail login: <https://odisej.rect.bg.ac.rs>

prikazan je izgled čija je glavna karakteristika da je sad prilagođen i web čitačima na telefonima i on je difoltni. Izbor drugih izgleda dat je na kraju uputstva.



Username

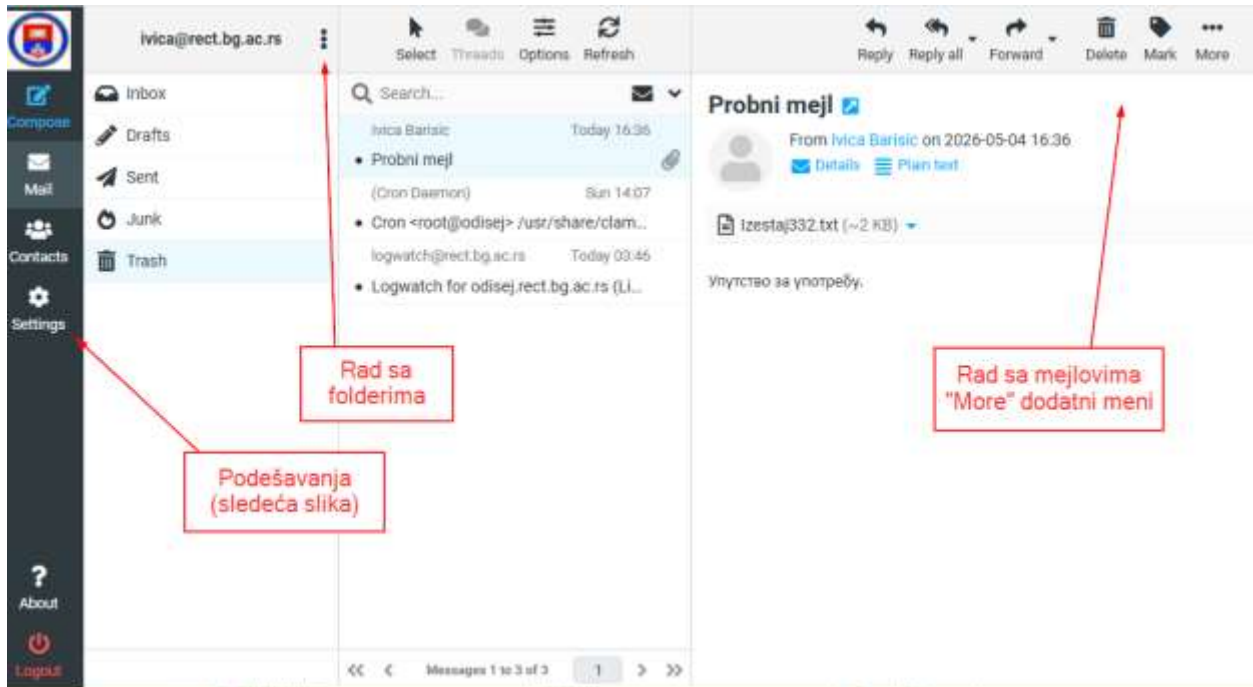
Password

LOGIN

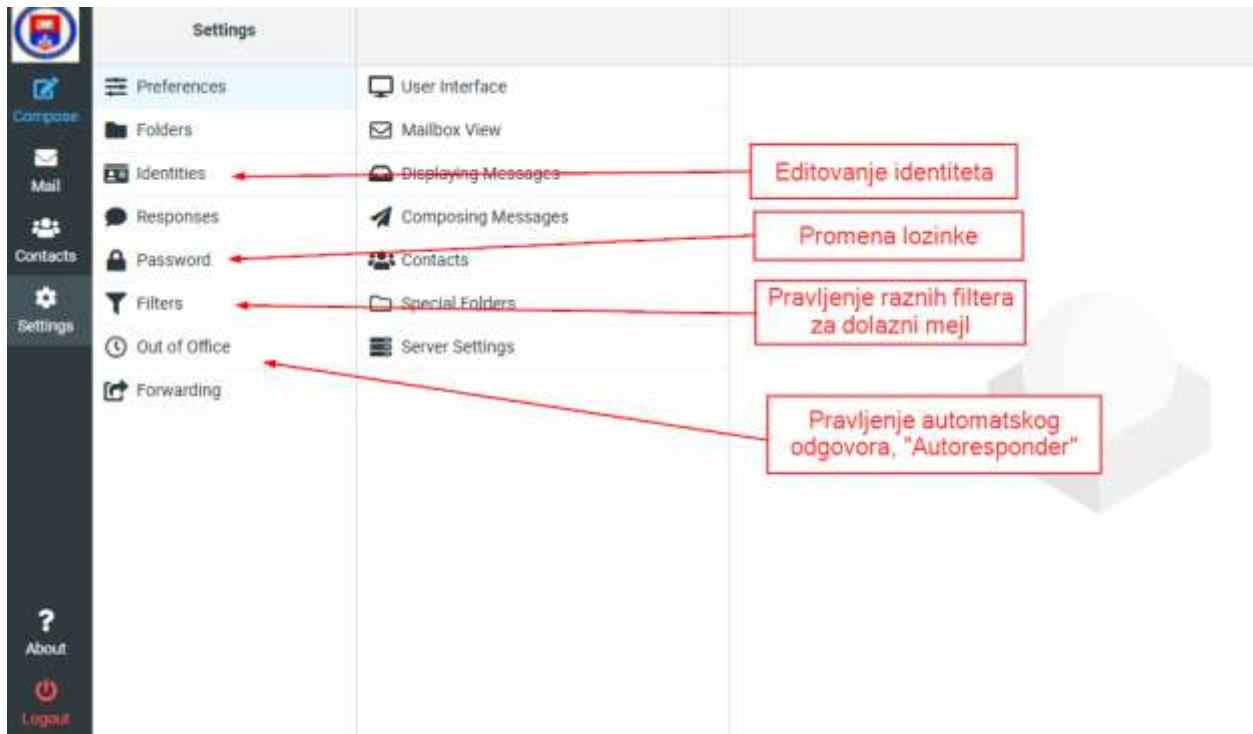
UoB Webmail • [Get support](#)

Ovo uputstvo

Nakon Logovanja dobijete ekran:



Klikom' na „Settings“ ulazite u podešavanja:



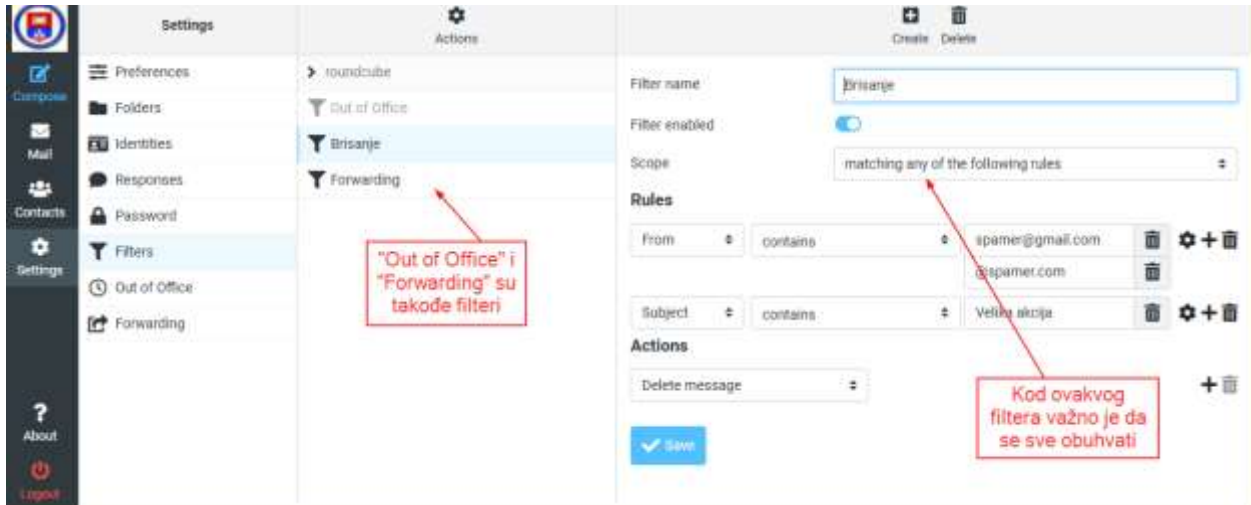
Prikaz pravljenja Out of Office obavesti (u starom SquirrelMailu Autoresponder).
Obratite pažnju na **OBAVEZAN** podatak (My e-mail addresses):

The screenshot shows the 'Settings' page for 'Out of Office' in SquirrelMail. The left sidebar contains navigation options: Compose, Mail, Contacts, Settings (selected), and About. The main content area is divided into 'Reply message' and 'Advanced settings'. The 'Reply message' section includes fields for Subject and Body, and a 'Status' dropdown set to 'off'. The 'Advanced settings' section includes fields for Reply sender address, My e-mail addresses (with a 'Fill with all my addresses' button), Reply interval (set to 1 day), and Incoming message action (set to 'Keep'). A 'Save' button is at the bottom. Red annotations with arrows point to: 'Forwarding' in the sidebar (labeled 'Forwarding' za prosleđivanje na jednu adresu), the 'Status' dropdown (labeled 'Uključen/isključen'), the 'My e-mail addresses' field (labeled 'OBAVEZAN podatak, klikom na Fill... učitavaju se svi vaši identiteti'), and the 'Keep' dropdown (labeled 'Šta sa dolaznim mejlom').

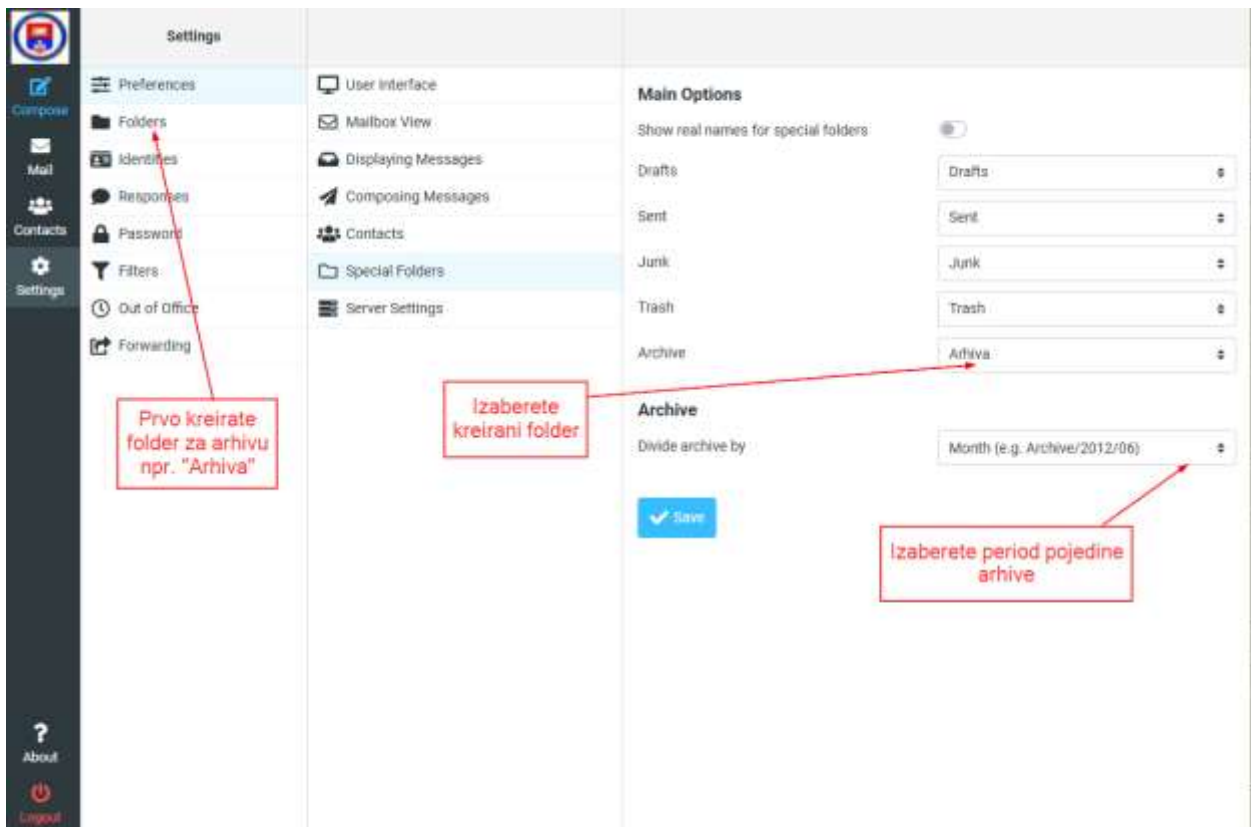
„Out of Office“ i „Forwarding“ (za prosleđivanje mejlova) su samo specijalni oblici „Filters“ opcije, za prosleđivanje na više adresa koristite „Filters“ opciju:

The screenshot shows the 'Settings' page for 'Filters' in SquirrelMail. The left sidebar contains navigation options: Compose, Mail, Contacts, Settings (selected), and About. The main content area is divided into 'Filter name', 'Filter enabled', 'Scope', and 'Actions'. The 'Filter name' is 'Forwarding', 'Filter enabled' is checked, and 'Scope' is 'all messages'. The 'Actions' section includes two 'Send message copy to' fields with email addresses 'nalog1@gmail.com' and 'nalog2@gmail.com'. A 'Save' button is at the bottom. Red annotations with arrows point to: 'Filters' in the sidebar (labeled 'Forwarding' napravljen preko "Filters" opcije) and the 'Send message copy to' fields (labeled 'Prosleđivanje na više adresa').

Primer korišćenja „Filters“ opcije za brisanje neželjenih mejlova. Ovo je jedan način, a mogu i posebni filteri za pojedinačne slučajeve. Opcija „Filters“ nudi mnogo mogućnosti :



Kreiranje specijalnog foldera za pravljenje periodične arhive mejlova:



Ako vam se ne sviđa ovaj interfejs možete izabrati još dva, dostupni su izborom interfejsa u „Setings“:

